

National Association of Rocketry
in partnership with the
Academy of Model Aeronautics
present



**The FAI World Championships for Space Models
For Juniors and Seniors**

2 July 2023 (Opening Ceremony) through 7 July 2023 (Closing Ceremony)

Austin, Texas (metropolitan area)

United States of America

Practical Information for Attendees and Spectators

18 June 2023



Website

The latest information about the 2023 FAI World Championships for Space Models, including weather updates, schedule changes, and results may be found on the event website at:

nar.org/championships

Introduction

Welcome to Texas and the **2023 FAI World Championships for Space Models!** This document is designed to serve as a handy reference guide for competitors, participants, and spectators to help them enjoy this unique event. If you have a question that is not answered by this document, stop by the National Association of Rocketry Information Desk located in the supporter's tent.

The FAI World Championships for Space Models are being hosted by the **National Association of Rocketry**, the world's oldest and largest organization devoted to sport rocketry. With almost 10,000 members, the NAR has been helping rocketry enthusiasts fly safely since 1957. The Championships are sanctioned by the **Fédération Aéronautique Internationale**, the world's governing body for air sports. When Charles Lindbergh landed in Paris in 1927 after the first successful solo crossing of the Atlantic by airplane, it was the FAI who officially certified his accomplishment. The Championships are also supported by the **Academy of Model Aeronautics**. With over 195,000 members the AMA is the largest organization in the world dedicated to the promotion of model aviation. The **Apache Pass Event Center** has graciously provided a world-class venue for the Championships, continuing their tradition of hosting major aero modeling events on this site.

Schedule

Saturday, July 1	Arrival Day
1100-1600	Arrival of participants, registration, accommodation - Robertson Center
1800-1900	Dinner - Bishops Lounge
1830-2000	Manager's Meeting, Olin 126 (Jury, Scale Judges, RSOs/ARSOs, Team Managers)
2000-2200	S5/S7 Entry Submission (by schedule below), Olin 126
2000-2015	China (CHN)
2015-2030	Romania (ROU)
2030-2045	United States (USA)
2045-2100	Poland (POL)
2100-2115	Ukraine (UKR)
2115-2130	Canada (CAN), Croatia (CRO), Great Britain (GBR), Latvia (LAT), Slovakia (SVK), Serbia (SRB), Spain (ESP)
Sunday, July 2	Practice Day, Opening Ceremony
0600-0715	Breakfast - Bishops Lounge
0715-0800	Transport to Contest Site - pickup behind McCombs Campus Center

0815-1400	Official practice
0900- 1000	Timekeeper Training on competition field
1200-1230	Lunch at Contest Site
1100-1400	Model Registration at Contest Site
1400-1445	Transport to Housing
1700-1800	Opening Ceremony - Robertson Center
1815-1930	Dinner - Bishops Lounge
1930-2030	Model Registration outside Scale Judging Room, Olin 126
Monday, July 3 Competition Day 1	
0600-0715	Breakfast - Bishops Lounge
0715-0800	Transport to Contest Site - pickup behind McCombs Campus Center
0800-1600	Model Registration at Contest Site
0830-0930	Round 1 Contest Flights, S4 Senior, S3 Junior
0930-1030	Round 2 Contest Flights, S4 Senior, S3 Junior
1030-1130	Round 3 Contest Flights, S4 Senior, S3 Junior
1130-1210	Lunch at Contest Site
1200-1210	Estes Demo Launch
1210-1310	Round 1 Contest Flights, S9 Senior, S6 Junior
1310-1410	Round 2 Contest Flights, S9 Senior, S6 Junior
1410-1455	Round 3 Contest Flights, S9 Senior, S6 Junior
1510-1530	Flyoff Round 1, S4 Senior, S3 Junior
1540-1550	Flyoff Round 2, S4 Senior, S3 Junior
1555-1615	Flyoff Round 1, S9 Senior, S6 Junior
1620-1630	Flyoff Round 2, S9 Senior, S6 Junior
1700-1745	Transport to Housing
1800-1845	Dinner - Bishops Lounge
2000-2100	Model Registration outside Scale Judging Room, Olin 126
Tuesday, July 4 Competition Day 2	
0600-0715	Breakfast - Bishops Lounge
0715-0800	Transport to Contest Site - pickup behind McCombs Campus Center
0800-1600	Model Registration at Contest Site (registration for S8 and S1 will be available)
0830-0930	Round 1 Contest Flights, S3 Senior, S4 Junior
0930-1030	Round 2 Contest Flights, S3 Senior, S4 Junior

1030-1130	Round 3 Contest Flights, S3 Senior, S4 Junior
1130-1215	Lunch at Contest Site
1215-1315	Round 1 Contest Flights, S6 Senior, S9 Junior
1315-1415	Round 2 Contest Flights, S6 Senior, S9 Junior
1415-1500	Round 3 Contest Flights, S6 Senior, S9 Junior
1515-1535	Flyoff Round 1 S3 Senior, S4 Junior
1545-1555	Flyoff Round 2 S3 Senior, S4 Junior
1600-1620	Flyoff Round 1 S6 Senior, S9 Junior
1630-1640	Flyoff Round 1 S6 Senior, S9 Junior
1700-1745	Transport to 4th of July baseball game and fireworks (optional)
1800-1845	Dinner (for those not attending baseball game) - Bishops Lounge
1800-2100	US Independence Day Celebration, Sugarland Space Cowboys vs. Round Rock Express, Dell Diamond, Round Rock
2100-2130	Transport from Dell Diamond to University
Wednesday, July 5 Competition Day 3	
0600-0715	Breakfast - Bishops Lounge
0715-0800	Transport to Contest Site - pickup behind McCombs Campus Center
0745-1600	Model Registration at Contest Site
Junior Track	
0815-0915	Round 1 Contest Flights, S1A Junior
0915-1015	Round 2 Contest Flights, S1A Junior
1015-1115	Round 3 Contest Flights, S1A Junior
1115-1215	Lunch at Contest Site
1215-1315	Round 1 Contest Flights, S8D Junior
1315-1415	Round 2 Contest Flights, S8D Junior
1415-1515	Round 3 Contest Flights, S8D Junior
1525-1540	Flyoff Round 1 S8D Junior
1550-1605	Flyoff Round 2 S8D Junior
Senior Track	
0815-0915	Round 1 Contest Flights S8P Senior
0915-1015	Round 2 Contest Flights S8P Senior
1015-1115	Round 3 Contest Flights S8P Senior
1115-1215	Round 4 Contest Flights S8P Senior
1215-1245	Lunch
1245-1345	Round 1 Contest Flights, S1B Senior

1345-1445	Round 2 Contest Flights, S1B Senior		
1445-1545	Round 3 Contest Flights, S1B Senior		
1555-1610	S8P Final Round 1		
1615-1630	S8P Final Round 2		
1700-1745	Transport to Housing		
1800-1845	Dinner - Bishops Lounge		
1900-2130	Awards Ceremony: S3 Senior, S4 Junior, S6 Senior, S9 Junior, S4 Senior, S3 Junior, S9 Senior, S6 Junior - Alma Thomas Theater		
2130-2200	Pick up S5/S7 entries, Olin 126 (following awards ceremony)		
Thursday, July 6	Competition Day 4: Public and Media Day		
0600-0715	Breakfast - Bishops Lounge		
0715-0800	Transport to Contest Site - pickup behind McCombs Campus Center		
0815-0945	Round 1 Contest Flights, S7 Junior	0815-0945	Round 1 Contest Flights S5C Senior
0945-1115	Round 2 Contest Flights, S7 Junior	0945-1045	Round 2 Contest Flights S5C Senior
		1045-1145	Round 3 Contest Flights S5C Senior
1130-1230	Lunch at Contest Site		
1200-1230	High Power and Sport Demonstration Launches		
1245-1415	Round 1 Contest Flights, S7 Senior	1230-1345	Round 1 Contest Flights, S5B Junior
1415-1545	Round 2 Contest Flights, S7 Senior	1345-1445	Round 2 Contest Flights, S5B Junior
		1445-1545	Round 3 Contest Flights, S5B Junior
1615-1700	Transport to Housing		
1800-1845	Dinner - Bishops Lounge		
1900-2000	Awards Ceremony: S1A Junior, S8E/P Senior, S8D Junior, S1B Senior - Alma Thomas Theater		
2000-2030	Model Registration (location TBD)		
2000-2130	Scale Show & Tell (location TBD)		
Friday, July 7	Competition Day 5, Reserve/Banquet Day		
0600-0715	Breakfast - Bishops Lounge		
0715-0800	Transport to Contest Site - pickup behind McCombs Campus Center		
0800-1115	Model Registration and Egg Issue on field		
0815-0915	Round 1 Contest Flights, S2/P Junior and Senior		
0915-1015	Round 2 Contest Flights, S2/P Junior and Senior		

1015-1115	Round 3 Contest Flights, S2/P Junior and Senior
1115-1200	Lunch at Contest Site
1200-1245	Transport to Housing
1300-1430	Spacemodeling Subcommittee Meeting (location TBD)
1645-1700	Transport to Closing Ceremony, Reunion Ranch
1730-1845	Awards Ceremony: S7 Senior, S7 Junior, S5C Senior, S5B Junior, S2/P Senior, S2/P Junior, Reunion Ranch
1845-1900	Closing Ceremony, Reunion Ranch
1900-2130	Banquet - Reunion Ranch
Saturday, July 8	Departure Day
0600-0800	Breakfast - Bishops Lounge
Before 1100	Departure

Events

FAI Spacemodeling is divided into eight core events. A useful analogy for understanding this is to compare competitive spacemodeling to gymnastics competition in the Olympics. There are multiple disciplines, each built on common skills, but each with a unique character and execution. Like Olympic gymnasts, spacemodeling competitors tend to specialize in individual events.

The eight core FAI spacemodeling disciplines are:

- * *Altitude* (FAI code S1): using motors of identical impulse, competitors fly a rocket as high as possible. The altitude is measured by a small barometric altimeter carried on board the rocket, with data transferred to a laptop for postflight evaluation. The highest altitude wins.
- * *Parachute Duration* (S3): using motors of identical impulse, competitors fly a rocket equipped with a parachute, aiming to keep the rocket in the air as long as possible. The competitor with the longest combined flight duration over three flights wins.
- * *Boost Glide Duration* (S4): competitors launch small gliding free-flight aircraft using motors of identical impulse, seeking to maximize flight time. The competitor with the longest combined flight duration over three flights wins.
- * *Streamer Duration* (S6): using motors of identical impulse, competitors fly a rocket equipped with a simple aerodynamic streamer, aiming to keep the rocket in the air as long as possible. The competitor with the longest combined flight duration over three flights wins. This event is notable for being the simplest event to fly, yet the most difficult to master.
- * *Helicopter Duration* (S9): competitors launch rockets equipped with deployable auto-rotating blades using motors of identical impulse, seeking to maximize flight time. The competitor with the longest combined flight duration over three flights wins.

- * *Scale (S7)*: competitors research and build museum grade replicas of actual full size rockets, then fly them in a manner that duplicates the flight profile of the real thing as closely as possible. This event is judged subjectively by an international panel of experts.
- * *Scale Altitude (S5)*: this event combines the measured altitude aspect of the S1 Altitude event and the subjectively judged elements of S7 Scale. Competitors build museum grade replicas of research rockets then fly them to as high as altitude as possible. Winners are ranked according to a combination of the judged element added to the highest altitude.
- * *Radio Control Rocket Glider (S8)*: competitors launch radio control aircraft vertically using motors of identical impulse, then guide the aircraft to a precision landing near a designated spot. Unlike the other timed duration events, the Radio Control Rocket Glider event is mission based, as competitors try to target a specific flight time.
- * One additional event will be contested at this World Championships, the *Precision Altitude Payload Competition (S2/P)*. This unique mission-based event challenges competitors to fly a fragile payload (an egg) to a specific altitude (300 meters), with a total flight time target of 60 seconds, measured from launch to touchdown. Winners are ranked according to how closely they adhere to these mission targets without damaging the egg!

Results

Results from each of the competition events are posted to the event website in near-real time, using the eNavigator results management tool. To see the latest results click on the “Results” tab of the event website at: <https://www.nar.org/site/wsmc-2023/results/>

Weather

It’s a bit on the warm side, isn’t it? Yes, our summers here are warm and humid, but early July conditions can be managed with a bit of planning. The most important thing is to **remain hydrated**. We will have plenty of water on hand for participants, and you can pick up a fresh bottle or two at the catering tent. If we see you without water don’t be surprised if we press a bottle into your hand. You can help manage the heat by remaining in **shade** as much as possible, whether it is in the tents on the range, using an umbrella, or simply wearing a hat. We also recommend having **sunscreen** on hand, and reapplying it several times throughout the day. Finally, move slowly and don’t push yourself while on the range. It can take a week or more for even the healthiest persons to acclimate to the heat.

Temperatures in early July typically reach the mid 90°F range (~35C), with **winds** out of the south-south-east (SSE).

Medical Needs

If you find yourself in need of medical attention, there is a First Aid tent on the range staffed by **Emergency Medical Technicians** (EMTs) from American Medical Response. They can assist with minor issues such as cuts, bruises, and sprains, and provide guidance should anyone need more advanced care. The most frequent issues are likely to be heat-related, so do the medical staff and yourself a favor by staying hydrated.

Should you require more advanced medical care, the nearest hospital to the flying field is the **Scott & White Medical Center Taylor**, located at 305 Mallard Ln, Taylor, TX 76574, approximately 24.5 miles (38 km) from the field.

In Georgetown the nearest hospital is the **St. David's Medical Center**, located at 2000 Scenic Dr. Georgetown, TX 78626. For non-emergency care there are a number of urgent care facilities in Georgetown, such as **St. David's CareNow**, located at 1205 S I-35, Georgetown, TX 78626.

Should you need either prescription or over-the-counter medications, there are many **pharmacies** in the area, such as Walgreens and CVS. Most larger supermarkets also have pharmacies.

On Campus

The primary housing site for the Championships is located at **Southwestern University**, 1001 E University Ave., Georgetown, TX 78626. Scale Judging and the Manager's Meeting will take place in F. W. Olin Building, room 126. The Opening Ceremony and medal ceremonies on Wednesday and Thursday will take place in the Corbin J. Robertson Center. Participants staying on campus will be housed in the Herman-Brown, Moody-Shearn, and McCombs Center residence halls. Rooms will be assigned at registration.

Smoking tobacco and vaping are prohibited in all buildings on the University campus and within 25' of building entrances, operable windows, or air intakes. This includes all residence halls and apartments other than balconies and patio areas of residence halls.

The consumption, possession, and distribution of alcoholic beverages on campus is prohibited. If you would like a drink, see the Local Restaurants section below. Additionally, the consumption, possession, or distribution of any controlled substance is not permitted.

Do not lose your **key!** A replacement for a key card is \$20, and a replacement for a physical key is \$100.

Southwestern University offers clothes washers and dryers that may be operated through the CSC Go mobile application (available for iOS or Android). Each load is \$1.25 to wash and \$1.25 to dry.

Meals

Breakfast and most dinners will be served on campus at the Red & Charline **McCombs Campus Center**. Lunches are catered, and will be served in the dining tent on the flying field. A vendor will be on the flying field most days selling snacks, sodas, and light meals.

Getting to the Field

The flying field is located on grass airport to the south of the **Apache Pass Event Center**, 9112 FM908, Rockdale, TX 76567. To get to the field go this address, then travel south on County Road 428A (also known as CR 433) approximately .8 mile (~1.25km). There will be grass parking areas there. Please park only in marked parking areas.

On the Field

The range is set up in the traditional World and Euro Champs style, with separate semicircular areas for Senior and Junior competitors. One significant departure from usual Championships practice is the use of a single massive **tent** that will accommodate all of the national teams. A similar tent is nearby for supporters, timekeepers, spectators, and catering. The **NAR Information Table** is located here.

Pop-up tents may be set up in the parking areas as long as you are mindful of the safe passage of pedestrians and other vehicles. No pop-up tents may be erected in the range area or anywhere outside of the parking area.

If you need to dispose of anything **trash cans** are in multiple locations on the field, please use them! There are two large dumpsters for trash. **Portable toilets and hand washing stations** are near the team and spectator tents.

Team Tent and Supporter's Tent

The teams will use a single, large (7,590 ft.²/705 m²) tent on the field. With ~175 competitors there will be more than enough space for all teams, and the combined space will ideally lead to more interaction and greater fellowship between the participants. An identical tent is nearby for supporters, helpers, timekeepers, and catering. We encourage supporters, helpers, timekeepers, and guests to make use of this second tent, reserving the team tent exclusively for team members.

Recovery

Recovery of models may prove to be challenging, especially if winds are high. If you go out on deep recovery please note the following:

- * Winds in July at this site are almost always from the SSW, moving to the NNE.
- * Do not take vehicles off road for *any* reason.
- * Use radios to communicate with your team members.
- * Do not leave trash in the recovery areas. If you find someone else's trash, please dispose of it in a trash can.
- * Show good sporting behavior. If you should find another competitor's model, please return it to them.
- * The road to the north of the field can be quite busy, so cross with care.
- * If your model goes north of the San Gabriel River, your recovery may be on land not associated with the Championships. Your model may be unrecoverable in this case.
- * Take water with you on recovery.
- * If you smoke while on recovery, please do so in a manner that will not inadvertently start a fire.

Banquet

At the end of the Championships week a Texas-style **banquet** and celebration will take place, preceded by an awards ceremony and the official Closing Ceremony. The festivities will take place at **Reunion Ranch**, 850 CR 255, Georgetown, TX 78633, approximately 17 miles (27 km) from Southwestern University. The menu will consist of barbecued brisket and sausage with a wide variety of traditional side dishes. Beer and wine will be available for adults. Music and

dancing will follow, featuring the acclaimed Austin band Skyrocket. A limited number of tickets for spectators will be available for sale at the NAR Information Table on the range.

Shopping

Georgetown offers a wide range of shopping opportunities for just about any need visitors may have. The **Wolf Ranch Town Center** is a good place to start, and the **Target** department store there can meet just about any immediate need (1015 W University Ave, Georgetown, TX 78628, about 1.9 miles/3 km from the University).

For more adventurous shoppers the Georgetown town square features a wide variety of higher end stores, most focused on women's clothing. The square is centered on the Williamson County Court House at 710 S. Main St., Georgetown, TX 78626 (.7 mile/1.1 km from the University).

The United States has the most remarkable grocery stores in the world. Go visit the **HEB** store to see why (1010 W. University Ave., Georgetown, TX 78628, 1.9 miles/3 km from the University).

Local Restaurants

If you're feeling adventurous and decide to eat a meal or two away from the Southwestern University campus, please do not eat at McDonald's. Instead, try the hamburgers at **Whataburger**, a cherished Texas fast food institution (multiple locations in the area).

Dos Salsas Mexican Restaurant offers wonderful authentic Tex-Mex cuisine, and the Margaritas there are a celebration of the mystical union between lime and tequila. 1104 S. Main St., Georgetown, TX 78626 (.5 mile/.8 km from the University).

Jimmy Vega's Smokehouse serves up amazing traditional barbecued meat, including brisket, sausage, turkey, ribs, chicken, and more. 408 W. University Ave., Georgetown, TX 78626 (.8 mile/1.2 km from the University).

If you are seeking southern comfort foods try **Blue Corn Harvest Bar and Grill**, 212 W 7th St #105, Georgetown, TX 78626 (.7 mile/1.1 km from the University).

The **Georgetown Town Square** features a wide variety of bars and restaurants, and is located within easy walking distance, centered on the Williamson County Court House at 710 S. Main St., Georgetown, TX 78626 (.7 mile/1.1 km from the University).

Local Attractions

Central **Austin** is located about 30 miles/48 km of Georgetown, and is one of the most vibrant, fastest growing cities in the US. Known primarily as a **government, higher education, and tech center**, major corporations such as Amazon, Apple, IBM, Meta/Facebook, Microsoft, Nvidia, Qualcomm, and Samsung have major operations here, and Dell, Oracle, and Tesla are headquartered in central Texas. While you are unlikely to get in the front door of any of these without an appointment and a sparkling resume, there's still a great deal to do and see here.

Located southwest of downtown Austin, **Barton Springs** is a stunningly beautiful natural swimming pool fed by crystal clear natural springs. The Springs are located in Zilker Park at Barton Springs Rd, Austin, TX 78704.

The **Texas State Capitol** was built in the late 1800s using locally quarried pink limestone, and serves as the seat of the local state government. Taller than the US Capitol building in Washington, the Texas State Capitol can be visited in downtown Austin at 1100 Congress Ave., Austin, TX 78701.

The Bob Bullock **State History Museum** is located just north of the Texas State Capitol Complex, and tells the story of Texas from prehistoric origins to the current day. 1100 Congress Ave., Austin, TX 78701.

If you've ever watched Lewis Hamilton win one of his five Formula One United States Grands Prix, you've already seen the **Circuit of the Americas**, a state-of-the-art motorsports facility located just southeast of Austin. Occasional events allow the public to gain access to the track, such as the popular Bike Nights there. Learn more by visiting the COTA website at: circuitoftheamericas.com/

Austin is perhaps best known for a varied and vibrant **music scene**, figuring in the careers of giants such as Willie Nelson and Stevie Ray Vaughn. There are countless music venues in central Austin, and just about any evening will allow you to see unforgettable live music. Google is your friend here.

Texas Attractions

Farther away from Austin there are two special highlights that each draw millions of visitors each year. San Antonio is located 110 mile/175 km south of Georgetown, and is the home of the iconic **Alamo**, site of a pivotal battle and siege in the story of Texas independence. Learn more at: thealamo.org

NASA's crewed space flight operations are centered at the **Lyndon B. Johnson Space Center** in Houston, about 200 miles/320 km from Southwestern University. US and international astronauts have trained at JSC since the days of the Gemini program, and NASA's Mission Control Center is located there. Among the items on display there are a complete Mercury Redstone booster, an Apollo Little Joe II test article, and the only complete flight-qualified Apollo **Saturn V** booster anywhere. Learn more at: spacecenter.org

Previous World Championships Locations

1972 Vršac, Yugoslavia (Serbia)
1974 Dubnica nad Váhom, Czechoslovakia (Slovakia)
1978 Yambol, Bulgaria
1980 Lakehurst, NJ, United States
1982 Nowy Sącz, Poland
1985 Yambol, Bulgaria
1987 Belgrade, Yugoslavia (Serbia)
1990 Kyiv, USSR (Ukraine)
1992 Melbourne, FL, United States
1994 Leszno, Poland
1996 Ljubljana, Slovenia

1998 Suceava, România
2000 Liptovský Mikuláš, Slovakia
2002 Kralupy nad Vltavou, Czech Republic
2004 Dęblin, Poland
2006 Baikonur, Kazakhstan (host: Russia)
2008 Lleida, Catalonia, Spain
2010 Irig, Serbia
2012 Liptovský Mikuláš, Slovakia
2014 Kaspichan, Bulgaria
2016 Lviv, Ukraine
2018 Włocławek, Poland
2021 Buzău, România
2023 Georgetown/Apache Pass (Austin Metro), Texas, United States
2025 Zrenjanin, Serbia

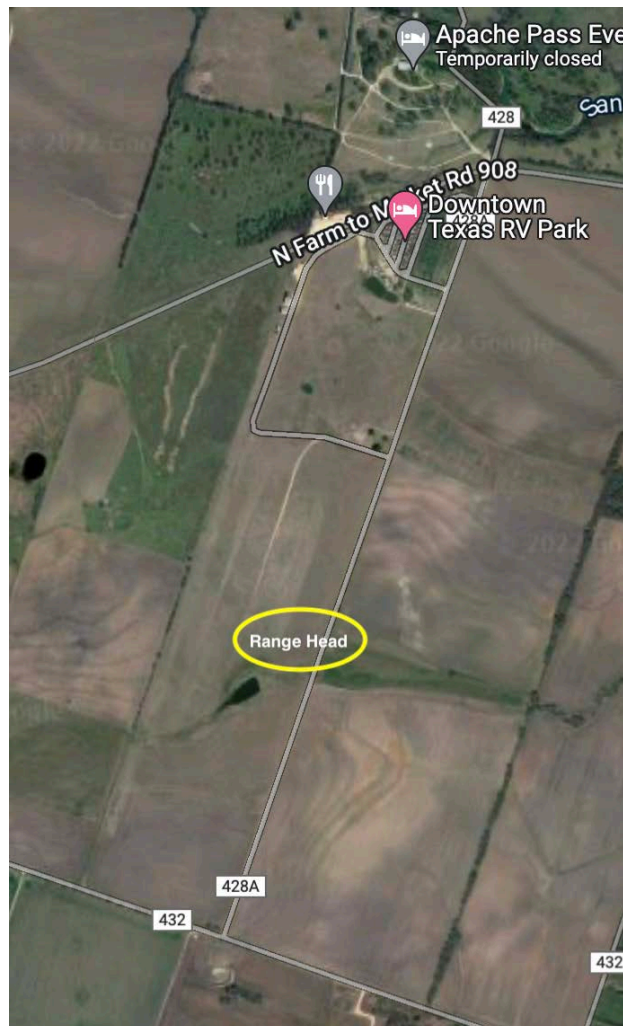
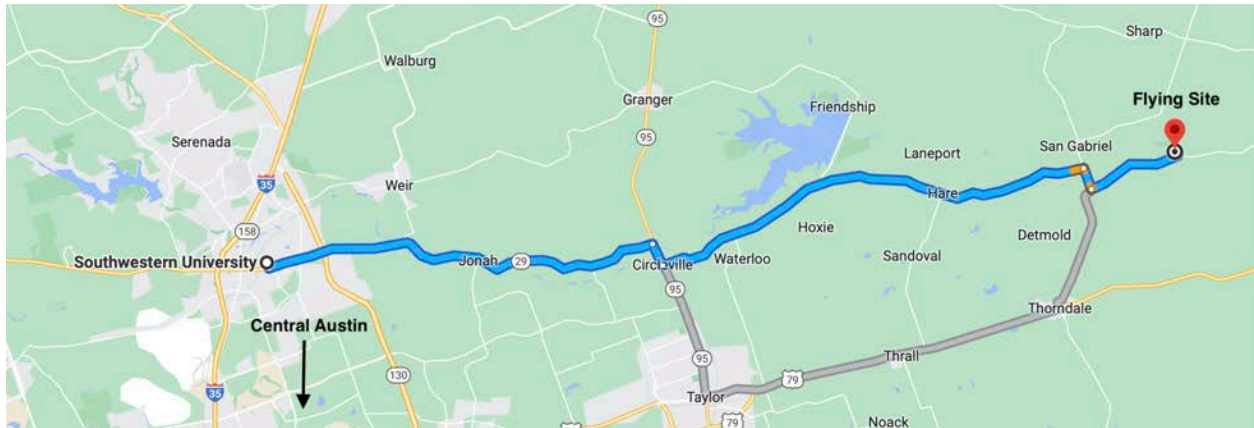
Current Senior World Records

S1B Altitude	Bob Kreutz	USA	753 meters
S3A Parachute Duration	Vladimir Khokhlov	RUS	31 minutes, 37 seconds
S4A Boost Glide Duration	Valery Mjakini	RUS	32 minutes, 19 seconds
S5C Scale Altitude	No record established at the current impulse level		
S6A Streamer Duration	Vladimir Khokhlov	RUS	4 minutes, 53 seconds
S9A Gyrocopter Duration	Antonio Mazzaracchio	ITA	3 minutes, 31 seconds

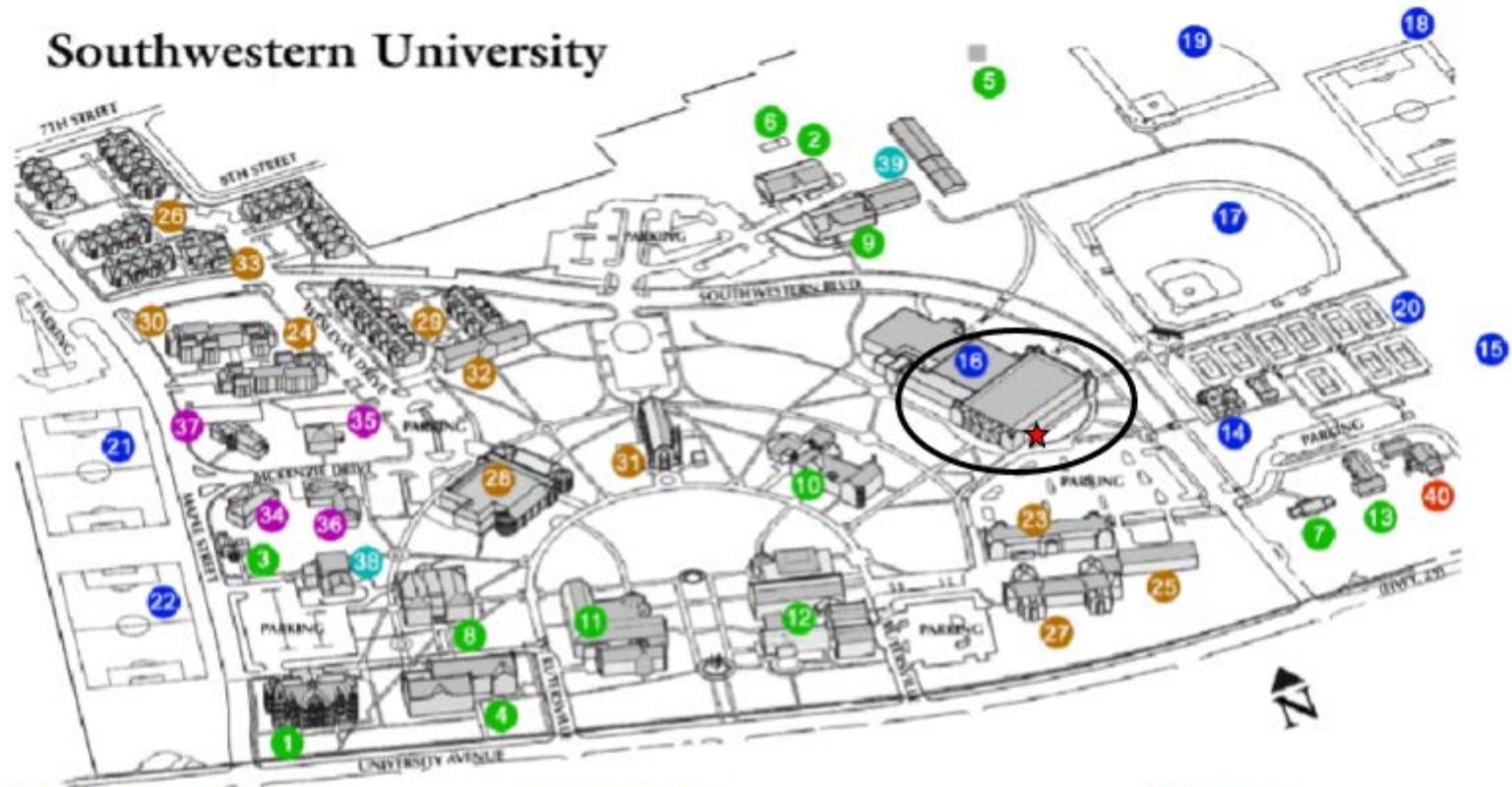
The round-normalized scoring used for the S8P Radio Controlled Rocket Glider event does not allow for the establishment of traditional records, nor does the subjectively scored S7 Scale event. Our Championships will allow for the establishment of a baseline record in the S2/P Precision Altitude/Precision Duration event.

Directions to Flying Site

The flying site is located at the airfield just to the south of the Apache Pass Event Center, 9132 N. FM 908, Rockdale, TX 76567. The airfield is on the south side of FM 908, accessible via CR 428A/CR433. Look for the signs!



Southwestern University



Academics/Administration

- 1. Roy & Lillie Cullen Building
- 2. Rufus Franklin Edwards Studio Arts Building
- 3. Field House (Campus Police)
- 4. Fondren-Jones Science Hall
- 5. Fountainwood Observatory
- 6. Greenhouse
- 7. McCook-Crain Building
- 8. Mood-Bridwell Hall
- 9. Joe S. Mundy Hall
- 10. F.W. Olin Building
- 11. A. Frank Smith, Jr. Library Center
- 12. Alma Thomas Fine Arts Center
- 13. Kyle E. White Building

Athletics/Recreation

- 14. Julie Puett Howry Center (Golf Shop)
- 15. Kurth-Landrum Golf Course
- 16. Corbin J. Robertson Center
- 17. Rockwell Baseball Field

Sports Fields

- 18. Soccer Fields
- 19. Taylor-Sanders Softball Field
- 20. Southwestern Tennis Courts
- 21. Robert K. Moses, Jr. Field
- 22. Snyder Athletic Field

Residence and Student Life

- 23. Brown-Cody Residence Hall
- 24. Herman Brown Residence Hall
- 25. Ernest L. Kurth Residence Hall
- 26. Grogan & Betty Lord Residential Center
- 27. J.E. & L.E. Mabee Residence Hall
- 28. Red & Charline McCombs Campus Center
- 29. Charline Hamblin McCombs Residential Center
- 30. Moody-Shearn Residence Hall
- 31. Lois Perkins Chapel
- 32. Martin Ruler Residence Hall
- 33. Sharon Lord Caskey Community Center (incl. Sorority Chapter Rooms)

Fraternities

- 34. Kappa Alpha House
- 35. Kappa Sigma House
- 36. Phi Delta Theta House
- 37. Pi Kappa Alpha House

Physical Plant

- 38. Central Chilling Station
- 39. Physical Plant Building & Warehouse

Other

- 40. Turner-Fleming House

CSC GO App Laundry Instructions

2023 Summer Camp Attendees

1. Download the CSC Go App
 - a. Apple App Store: <https://apps.apple.com/us/app/csc-go/id1552572916>
 - b. Google Play Store:
<https://play.google.com/store/apps/details?id=com.cscsw.cscgo>
 - c. **OR** use the web browser version to start the machines and pay
 - d. Sign up for an account with your email address and claim your \$5 reward

2. Select Location as Southwestern University: **Lord Caskey Center**
 - a. This shows you how many washers and dryers are available currently

3. Scan the **QR Code** using your camera which will take you to the CSC GO App **OR** open the CSG App and Select your machine

4. Select wash settings on machine/ load clothing

5. Press the blue pay button
 - a. Add funds from Credit Card, Debit, Apple Pay, or Google Pay

6. Do not use the Kiosk/Tablet on the right wall as this is for students to pay with student ID's